



Handling Instructions



FOR SUBCUTANEOUS INJECTION ONLY

D-mine[®] Pen

INTRODUCTION

This brochure contains instructions for using the InterPharma *D-mine*[®] Pen injector and disposables. It is not intended to replace the *Instructions for Use* provided with the pen.

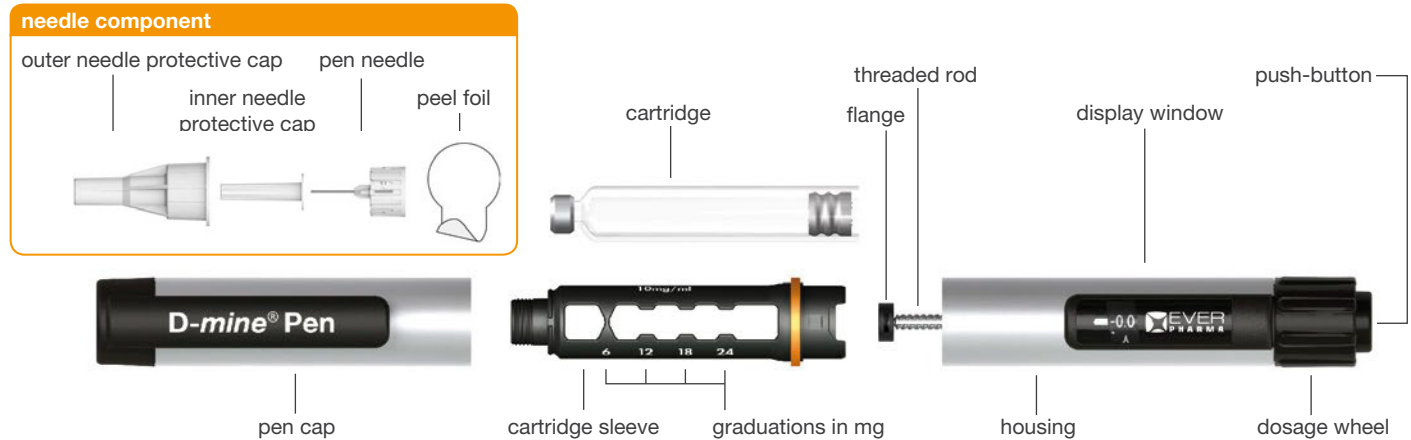
Your *D-mine*[®] Pen can deliver doses from 0.5 to 6.0 mg, in increments of 0.5 mg. It is designed to be used with Apomine[®] Intermittent 3 mL cartridges (containing apomorphine hydrochloride hemihydrate 10 mg/mL) from InterPharma (please refer to the *Consumer Medicine Information* (CMI)) and appropriate pen needles.

Compatible pen needles:

- BD Micro-Fine Ultra[™] needles 29 to 31 gauge (diameter 0.25 – 0.33 mm) and 5 - 12.7 mm length.
- Pen needles from other manufacturers can be used according to their stated compatibility details.

Before using the *D-mine*[®] Pen, wash your hands. You will need some surgical wipes and one needle in its protective cone. Using a surgical wipe, clean the area of skin where you plan to inject the medicine and around it. Inject into an injection site on the front of your waist (abdomen) or your outer thighs under the skin (subcutaneously) as shown by your doctor or nurse. Change your injection site each time you use the *D-mine*[®] Pen. Do not inject into an area of skin that is sore, red, infected or damaged. You must never inject yourself directly into a vein (intravenously) or muscle (intramuscularly).

DESCRIPTION OF PARTS OF D-mine[®] PEN THERAPY



Please refer to the *Instructions for Use* of your D-mine[®] Pen for complete information. If you have any questions relating to Apomine[®] or your D-mine[®] Pen, our ANSSER Service will be happy to help at any time.

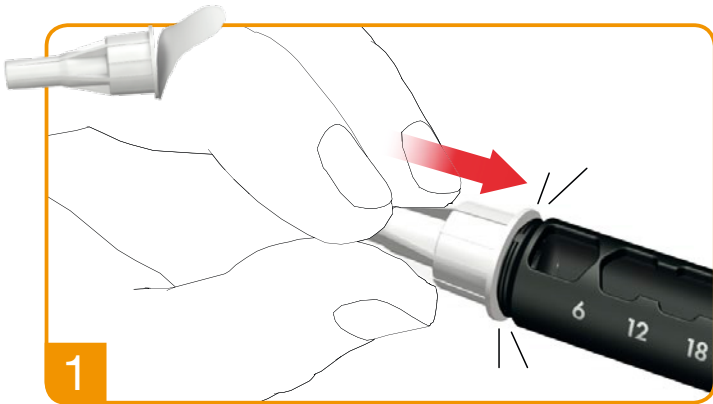
ANSSER (Nurse Support Service): 1800 276 646.

ATTACHMENT OF PEN NEEDLE

Follow the *Instructions for Use* of your pen needle.

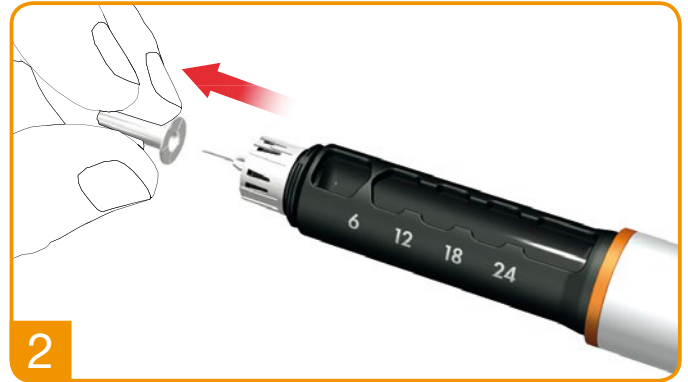
1. Pull off the peel foil.

Click or twist the Pen needle onto the Pen. Check that the pen needle is attached correctly.



2. Remove the outer and inner needle protective cap.

Keep the outer needle protective cap to safely remove and dispose of the pen needle after use.



FUNCTION CHECK AND DOSE DIALING

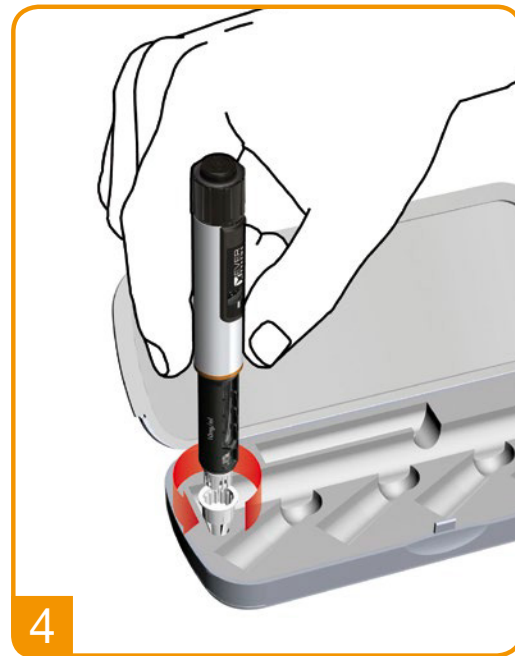
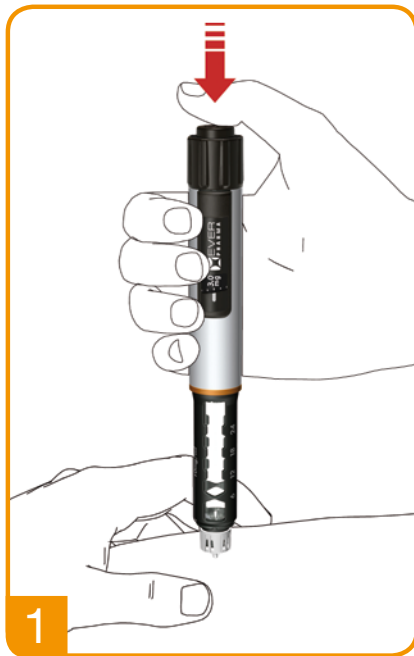
Priming/Function Check

The function check ensures that any remaining air in the cartridge is removed and that no blockage is present in the needle. Priming is recommended before every use, including cartridge change and attachment of pen needles.



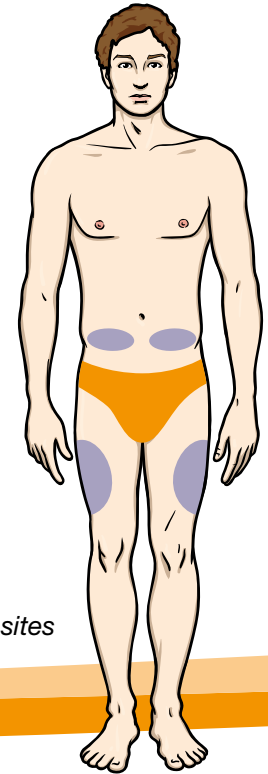
Dial the required dose by turning the dosage wheel clockwise. Correct the dose by turning anti-clockwise. Check the dialed dose by looking vertically from above and not at an angle onto the display, so that the numbers are clearly identified.

INJECTION



Note: You can interrupt the injection by releasing the push-button. The remaining amount of medicine not delivered can be seen on the display and can be injected by pressing the push-button again.

- 1. Use the injection technique as recommended** by your doctor or nurse. Press the push-button in fully for injection. Hold the push-button pressed down during medication discharge.
- 2. After the medication has been completely discharged, wait for 6 seconds** and then pull out the pen needle slowly. You may either hold the push-button pressed or release it during the 6 seconds.
- 3. Check** if the display is at the “0.0” position for full dose delivery.
- 4. Place the Outer Pen Needle Shield in the notch** located in your carrying case to dispose the needle correctly.
- 5. Place used needle into a sharps container.** Available from your nurse or pharmacy.



Recommended injection sites

If you have questions about using the D-*mine*[®] pen, or experience any side effects, please talk to your doctor or nurse. Additional information about Apomine[®] Intermittent is also available in the *Consumer Medicine Information* which you can access from your doctor or pharmacist.

This booklet has been produced by InterPharma in the interests of patient education.
Apomine[®] is a registered trademark.
D-*mine*[®] Pen is a registered trademark of EVER Neuro Pharma GmbH, Austria.
All other trademarks cited are the property of their respective owners.

Further information is available from InterPharma Medical Information at 1300 308 213 or medinfo@interpharma.com.au.
© InterPharma Pty Ltd. Sydney, Australia. ABN 19 099 877 899. Prepared: September 2023. IP-APO-106.